

Table of Contents

22 Cylinder Trailer - Available for quick delivery	3
30 cylinder trailer (representative photo).....	4
36 Tube Trailer - Available for quick delivery	5
38 cylinder trailer – Available Immediately	6
40 Tube Trailer - In stock	7
44 tube trailer - in test to Dec 2018 - Available Dec 31/2010.....	8
49 Tube Trailer (32’ tubes) - currently on lease	9
60 tube 3AA trailers - in test to Sep & Nov 2012.....	10
35 CFM CNG Filling Station with 4 stage V16G Heavy Duty LMF Compressor	11
35 CFM Fully enclosed 4 stage Heavy Duty LMF V16G Compressor	12
550 SCFM CNG Compressors –Available	13
54 tube skid mounted on a trailer - On Lease	14
8 tube 40’ ABS Skids (3AAX 36’ tubes); 2900/3190 PSI.	15
10 tube 2850/3135 PSI 40’ ABS Skids (3T 36’ tubes).....	16
CNG Garbage/Refuse Truck.....	17
Hybrid CNG/LNG Bus	18
Liquid nitrogen generator/separator PLN 106	19



New 8 Tube Jumbo Trailer (3AAX or UN)

Argon SCF	Helium SCF	Nitrogen SCF	Oxygen SCF	Hydrogen SCF	Natural Gas* SCF	Ethylene lbs	Heliox SCF	Air SCF
139,579	121,412	126,774	140,076	118,442	169,766	14,636	125,553	129,730

SCF @ 2640 PSI and 70F (or higher)

Tare weight 55,000 lbs app.; Dimensions: 44' long x 98" wide x 8'6" high;

Water Volume: 728 cubic feet; DOT 3AAX-2400+ PSI;

New Trailer; To Meet all US DOT / Transport Canada requirements for above listed gases

*Special permit may be required for NG transport



22 Cylinder Trailer - Available for quick delivery

Argon	Helium	Nitrogen	Oxygen	Hydrogen	Natural Gas*	Heliox	Air	CO	Neon
37,119	32,423	33,963	37,251	31,725	45,444	42,643	34,500	29,197	35,351

SCF @ 2640 PSI and 70F

Tare weight 23,000 lbs app.; Dimensions: 24' long x 96" wide x 8'6" high;

Water Volume: 193.6 cubic feet; DOT 3AA-2400 PSI cylinders; Trailer certified, tires either 80% or better; Meets all US DOT / Transport Canada requirements for above listed gases

*Special permit may be required for NG transport



30 cylinder trailer (representative photo)

Argon SCF	Helium SCF	Nitrogen SCF	Oxygen SCF	Hydrogen SCF	Natural Gas SCF	Methane SCF	Ethylene lbs	Ethylene SCF	Heliox SCF
50,617	44,213	46,313	50,797	43,261	61,968	58,149	5,308	73,241	45,530

SCF @ 2640 PSI and 70 Fahrenheit.

Tare weight 30,000 lbs app.

Dimensions: 24' long x 96" wide x 8'6" high

Water Volume: 264 cubic feet

DOT 3AA-2400 PSI cylinders

Trailer certified, tires either 80% or better; Meets all US DOT / Transport Canada requirements for above listed gases



36 Tube Trailer - Available for quick delivery

Argon SCF	Helium SCF	Nitrogen SCF	Oxygen SCF	Hydrogen SCF	Natural Gas SCF	Methane SCF	Ethylene lbs	Ethylene SCF	Heliox SCF
60,740	53,056	55,576	60,956	51,913	74,362	69,779	6,369	87,890	54,636

SCF@ 2640 PSI and 70 Fahrenheit.

Tare weight 35,000 lbs app.

Dimensions: 24' long x 96" wide x 8'6" high

Water Volume: 317 cubic feet

DOT 3AA-2400 PSI cylinders

Trailer certified, tires either 80% or better; Meets all US DOT / Transport Canada requirements for above listed gases



38 cylinder trailer – Available Immediately
 (Representative photo)

Argon SCF	Helium SCF	Nitrogen SCF	Oxygen SCF	Hydrogen SCF	Natural Gas SCF	Methane SCF	Ethylene lbs	Ethylene SCF	Heliox* SCF	Argon SCF
64,115	56,004	58,663	64,343	54,797	78,493	73,656	6,723	92,772	57,671	64,115

SCF @ 2640 PSI and 70 Fahrenheit
 Tare weight 34,000 lbs app. ;
 Dimensions: 24' long x 96" wide x 8'6" high;
 Water Volume: 334 cubic feet;
 DOT 3AA-2400 PSI cylinders;
 Trailer certified, tires either 80% or better;
 Meets all US DOT / Transport Canada requirements for above listed gases



40 Tube Trailer - In stock

Argon SCF	Helium SCF	Nitrogen SCF	Oxygen SCF	Hydrogen SCF	Natural Gas SCF	Methane SCF	Ethylene lbs	Ethylene SCF	Heliox SCF
67,489	58,951	61,751	67,729	57,681	82,625	77,532	7,077	97,655	60,707

SCF @ 2640 PSI and 70 Fahrenheit.
 Tare weight 38,000 lbs app.
 Dimensions: 28' long x 96" wide x 8'6" high
 Water Volume: 352 cubic feet
 DOT 3AA-2400 PSI cylinders
 Trailer certified, tires either 80% or better; Meets all US DOT / Transport Canada requirements for above listed gases

FIBA Canning Inc.
Ph: 416-299-1142 Toll Free: 1-800-567-5930 Fax: 416-299-0349
Email: kcanning@fibacanning.com
www.fibacanning.com

44 tube trailer - in test to Dec 2018 - Available Dec 31/2010

Available immediately or if desired, upon retest
Water Volume: 378.4 cubic feet
Service – currently in **nitrogen service**
Pressure: 2400/2640 PSI





49 Tube Trailer (32' tubes) - currently on lease

Argon SCF	Helium SCF	Nitrogen SCF	Oxygen SCF	Hydrogen SCF	Natural Gas SCF	Methane SCF	Ethylene lbs	Ethylene SCF	Heliox SCF
130,587	114,067	119,484	131,052	111,610	159,874	150,020	13,694	188,957	117,464

SCF @ 2640 PSI and 70 Fahrenheit.

Tare weight xxx lbs app.

Dimensions: 36' long x 96" wide x 8'6" high

Water Volume: 681.1 cubic feet

DOT 3AA-2400 PSI cylinders

Trailer certified, tires either 80% or better.

Meets all US DOT / Transport Canada requirements for above listed gases



60 tube 3AA trailers - in test to Sep & Nov 2012

Argon	Helium	Nitrogen	Oxygen	Hydrogen	Natural Gas	Ethylene lbs	Ethylene SCF	Heliox*	Air
101,233	88,057	92,626	101,594	85,903	123,127	10,615	146,483	91,060	94,090

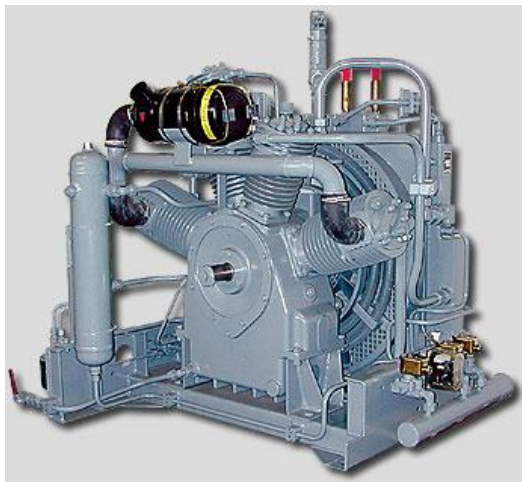
SCF @ 2640 PSI and 70F

Tare weight: 55,000 lbs app.; Dimensions: 48' long x 96" wide x 8'6" high; Tandem axle with 10' spread; Tare Weight Rear axles weigh 33,120; Trailer Tare weight is 55,160 lbs
 Two banks of 30 tubes each.

Water Volume: 528 cubic feet; DOT 3AA-2400 PSI cylinders;

Trailer certified, tires either 80% or better; Meets all US DOT / Transport Canada requirements for above listed gases

FIBA Canning Inc.
Ph: 416-299-1142 Toll Free: 1-800-567-5930 Fax: 416-299-0349
Email: kcanning@fibacanning.com
www.fibacanning.com



35 CFM CNG Filling Station with 4 stage V16G Heavy Duty LMF Compressor

Complete (“turn-key”) CNG system; Compressor: LMF V16G (www.lmf.at) – 35 SCFM; 5 PSI suction 25,000 SCF buffer system (40 Chesterfield cylinders; 3600 PSI); Prescon Ltd. (Intermech) single hose dispenser; high pressure gas dryer; Heated enclosure, skid mounted.

35 CFM Fully enclosed 4 stage Heavy Duty LMF V16G Compressor

LMF Heavy Duty Aircooled Compressor (used)

Manufacturer : Leoberdorfer Maschinenfabrik AG

Type : Air Cooled

Model : V16-3410-L5

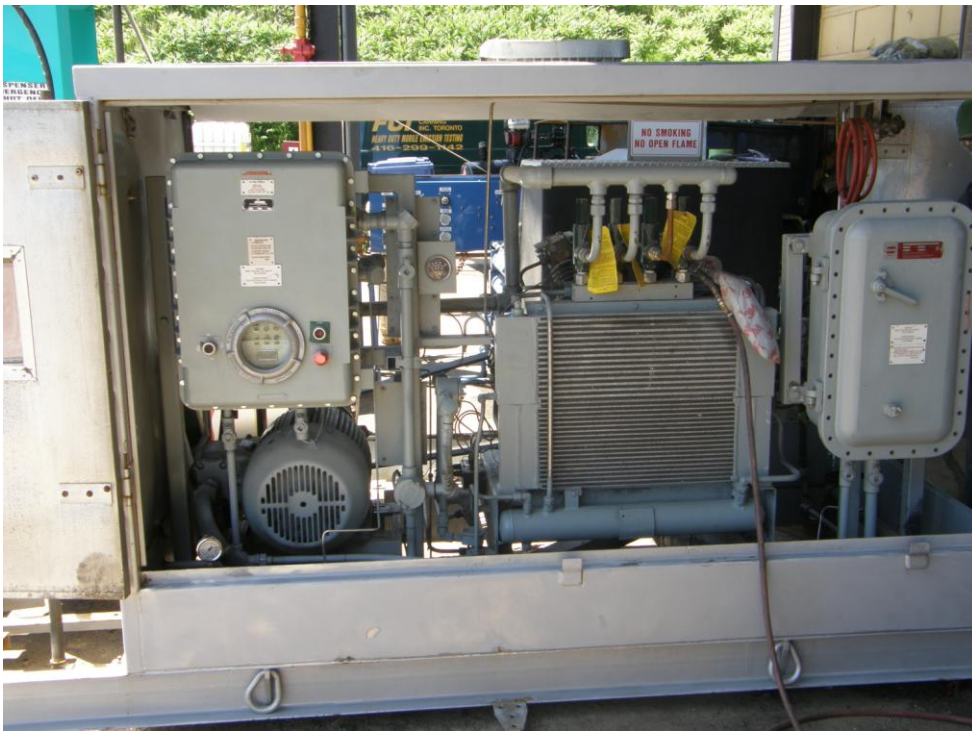
Four stages, single acting, aircooled cylinders

Delivery: 1 m³/min (35 cfm)

Working pressure 250 bar (3600 PSI)

Electric motor 18,5 kW (25 hp); **Just Rebuilt - 0 hours on it since it has been rebuilt.**

This compressor is in good condition and fully functional.



550 SCFM CNG Compressors –Available

TWO (2) fully packaged electric motor driven CNG compressors each enclosed in it's own weather-proof enclosure and complete with 400 Hp, 600/3/60 explosion proof electric motor, interstage coolers and separators etc. The compressors are Knox-Western model TP-400 four-stage units rated for 550 SCFM (935 M3/Hr) each. Suction pressure range 60-80 PSIG. Maximum discharge pressure is presently 3600 PSIG. Can be converted to 5000 PSIG.

This system was originally installed in 1990 and each compressor presently has approximately 18,500 hours of operation. The compressors have recently been serviced with new piston rings. All of the equipment was in good operating condition, but is sold on an "As Is-Where Is" basis.



Compressors have been well maintained, and maintenance records are included. \$70,000 US each. Gas Dryer available for \$20,000.



54 tube skid mounted on a trailer - On Lease

Argon	Helium	Nitrogen	Oxygen	Hydrogen	Natural Gas	Methane	Ethylene Lbs	Ethylene SCF	Heliox	Air
91,110	79,584	83,363	91,434	77,870	111,543	104,668	9,554	131,834	81,954	84,681

SCF @ 2640 PSI and 70 Fahrenheit

Tare weight: trailer with tubes - 52,600 lbs (with tractor and loaded with gas under 80,000 lbs gross)

Skid Dimensions: app. 22' long x 102" wide x 78" high; Trailer dimensions: 48'; tandem axle with 10' spread

Water Volume: app. 475.2 cubic feet

DOT 3AA-2400/2640 PSI cylinders;

Meets all US DOT / Transport Canada requirements for above listed gases



8 tube 40' ABS Skids (3AAX 36' tubes); 2900/3190 PSI.

Argon	Helium	Nitrogen	Oxygen	Hydrogen	Natural Gas*	Ethylene Lbs	Ethylene SCF	Heliox	Air	HCL Lbs.
147,530	128,866	134,986	148,055	126,090	180,616	12,770	176,209	132,704	137,119	25,724

(Standard Cubic Feet at 3190 PSI and 70 Fahrenheit)

Tare weight 56,440 lbs

Dimensions: app. 40' long x 96" wide x app. 4' high;

Water Volume: app. 635 cubic feet;

DOT 3AAX-2900 + PSI cylinders 22" Outer diameter x 36' long;

Meets all US DOT / Transport Canada requirements for above listed gases

* call to discuss use of Natural Gas/Methane in these tubes

Note: larger skids may be built, depending on road weight restrictions of operating jurisdiction

May be purchased with or without trailer for transport

Estimated weights for CNG service: tractor 17,000 lbs; (tridem axle) trailer 8,460 lbs; Skid 56,440 lbs; CNG 8120 lbs = 89,560 lbs



10 tube 2850/3135 PSI 40' ABS Skids (3T 36' tubes)

Argon	Helium	Nitrogen	Oxygen	Hydrogen	Natural Gas**	Methane**	Ethylene Lbs	Ethylene SCF	Heliox
186,378	159,811	170,531	187,041	N/A	217,412	214,114	18,104	227,110	167,649

*SCF at 3135 PSI and 70 Fahrenheit

Tare weight 55,320 lbs; Estimated weights tractor 17,000 lbs; (tridem axle) trailer 8,460 lbs; Skid 55,320 lbs = 80,780 lbs + weight of gas

Dimensions: app. 40' long x 96" wide x app. 71" high;

Water Volume: app. 818.6 cubic feet; US DOT 3T-2850+ PSI cylinders 22" outer diameter x 36' long;

Meets all US DOT / Transport Canada requirements for above listed gases

** call to discuss use of Natural Gas/Methane in these tubes

Note: larger skids may be built, depending on road weight restrictions of operating jurisdiction

May be purchased with or without trailer for transport

CNG Garbage/Refuse Truck



This recycling / refuse truck (featured on the Discovery Channel) saw two years of service as the world's first CNG Hybrid recycling vehicle in the early 1990's and is looking for a good home. Hydraulic hi-pressure nitrogen system to store braking energy has been removed so it is CNG powered only. Body options are available to tailor for refuse / recycling service. 20,000 lbs. front axle; 23,000 lb rear axle, 42 cubic yard capacity. In running order, and can be painted to suit customer. Asking \$20,000, as is, or can be customized to customer requirements at additional fee.

Hybrid CNG/LNG Bus



This award winning bus saw two years of revenue service as the world's first CNG/LNG/Hybrid urban transit bus in the early 1990's and is looking for a good home. Hydraulic hi-pressure nitrogen system to store braking energy and can run on either CNG or LNG. Asking just \$15,000 as is, in good condition.

FIBA Canning Inc.
Ph: 416-299-1142 Toll Free: 1-800-567-5930 Fax: 416-299-0349
Email: kcanning@fibacanning.com www.fibacanning.com

Liquid nitrogen generator/separator PLN 106

Phillips Model 7170-II; 6 litres per hour production; includes operation manuals and sold in working condition; 99.5% purity – just \$5,000 or best offer.

